

1Kb Plus DNA Ladder

Cat.No. BM211

Storage: at 4°C for six months; at -20°C for two years

Concentration: 0.13 mg/ml

Description

1Kb Plus DNA Ladder is a premixed, ready-to-load molecular weight marker containing eight linear double-stranded DNA fragments. The DNA Ladder is suitable for use as molecular weight standards for agarose gel electrophoresis. The DNA Ladder contains 300 bp -10.0 kb DNA fragments. The 2.0 kb band (100 ng/5 μ l) has doubled intensity than other bands to serve as reference band.

Highlights

- Ready-to use molecular weight marker for DNA size range of 300 bp to 10.0 kb.
- All bands from restriction enzyme digested plasmids.
- Brighter 2.0 kb reference band

Composition

300 bp, 500 bp, 800 bp, 1,000 bp, 1,500 bp, **2,000 bp**, 3,000 bp, 4,000 bp, 5,000 bp, 6,000 bp, 8,000 bp, 10,000 bp

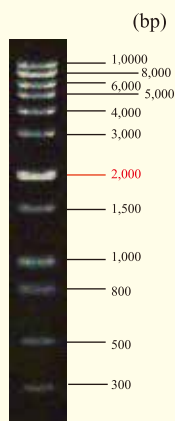
Storage Buffer

10 mM Tris-HCl (pH 8.4), 10 mM EDTA, 0.02% bromophenol blue, 5% glycerol

Notes

- In general, we recommend to use 1 μ l 1Kb Plus DNA Ladder per mm of gel lane, or 5 μ l per gel lane.
- The 1Kb Plus DNA Ladder is not intended for precise quantification of DNA mass but can be used for estimating the molecular weight of linear, double-stranded DNA fragments.
- Do not use the 1Kb Plus DNA Ladder with polyacrylamide gels.
- For long term storage, store at -20°C. If stored at -20°C, mix well after thawing.

1Kb Plus DNA Ladder (5 μ l)



1.0% TAE agarose gel stained with GelStain
(loading volume: 5 μ l)

FOR RESEARCH USE ONLY